

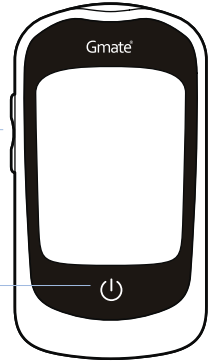
간단사용설명서

Gmate® Origin



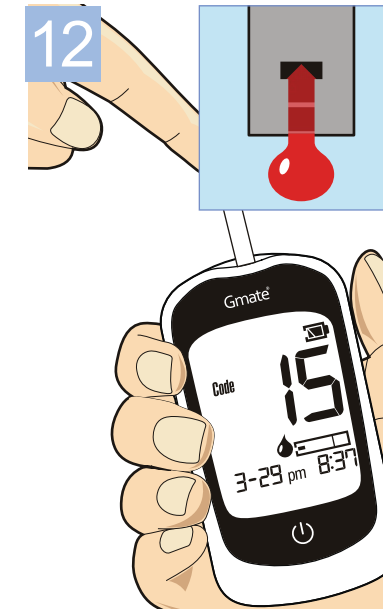
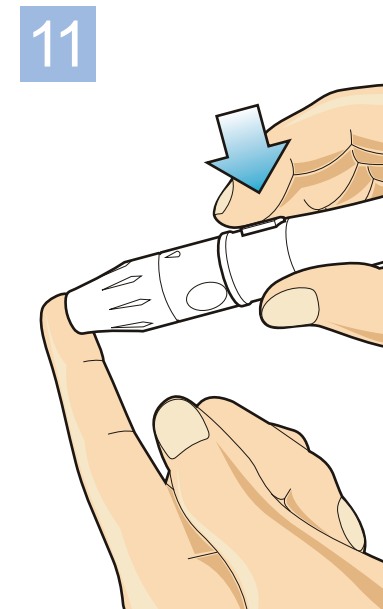
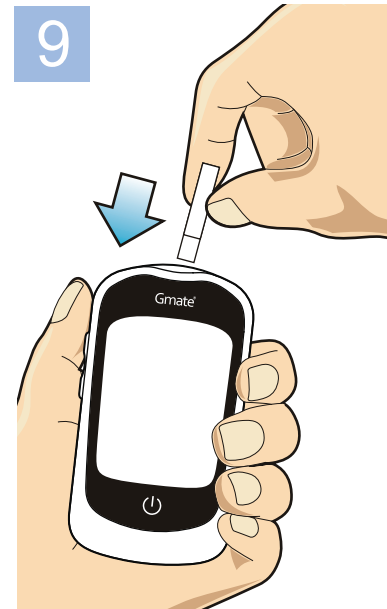
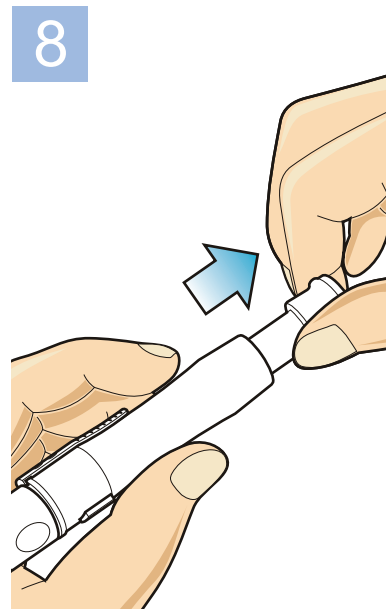
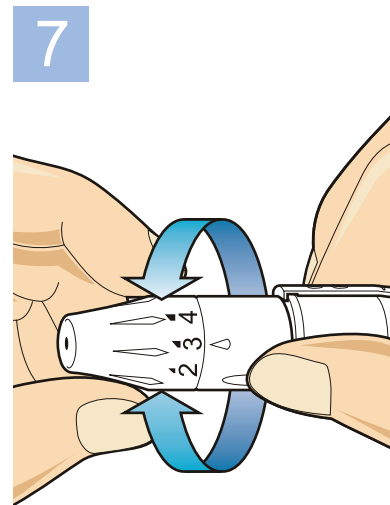
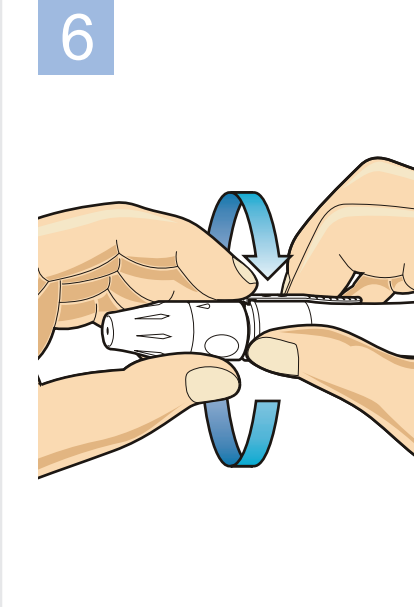
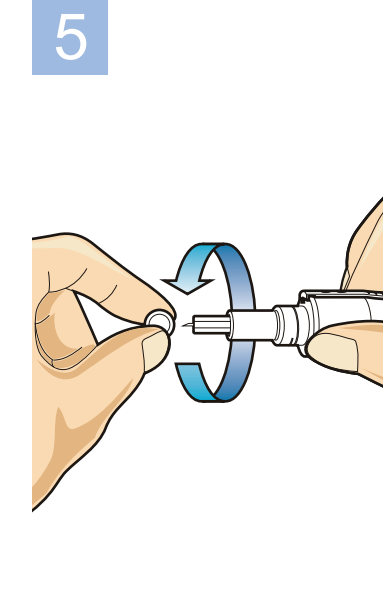
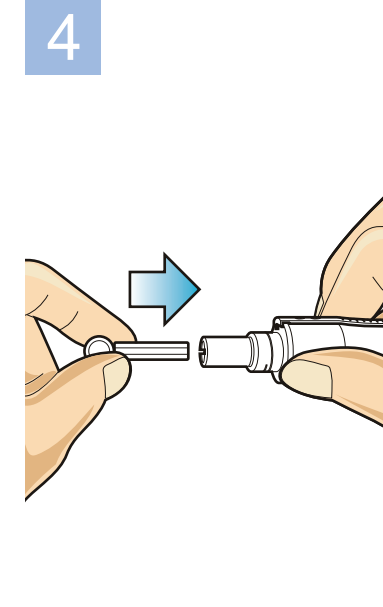
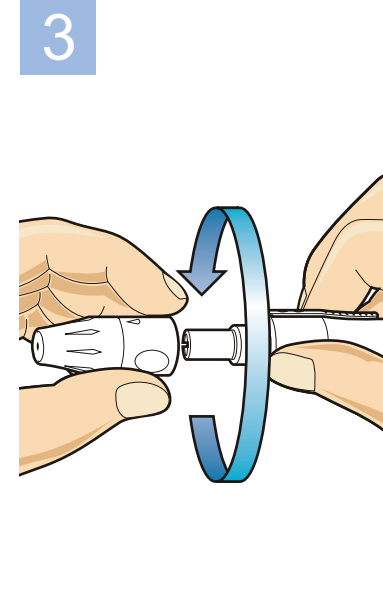
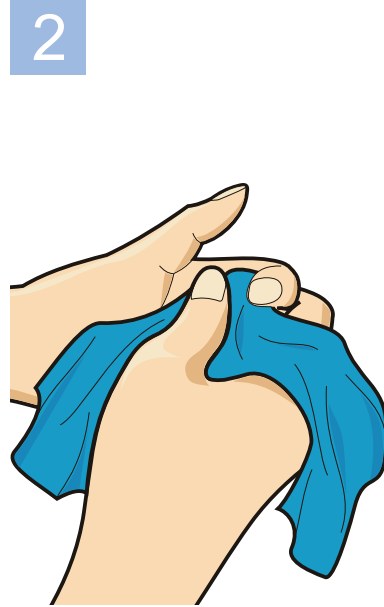
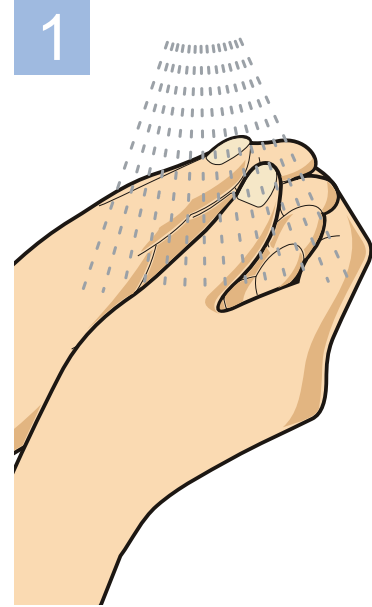
측면버튼 (위/아래 버튼)





측면에 버튼을 이용하여 셋팅 모드에서 저장된 결과를 불러오거나 한도를 조정합니다.



전원 버튼

전원 켜짐/꺼짐 및 기기 모드 변경 시 누르세요.



-  E01 사용한 개인용혈당검사지 삽입 시
-  E02 개인용혈당검사지 오류 및 문제 발생 시
-  E03 기기에 이상이 있을 시
-  E04 주위 온도가 시스템 작동 범위 (10~40°C)를 벗어날 시
-  E05 측정 중 나타날 수 있는 에러 메시지입니다. 사용 설명서의 혈당 측정 페이지를 확인하시고 다시 측정을 해보십시오.